



V2.4

P4-4P

SYSTEM USER MANUAL



In order to understand the function of this system completely, please have a through reading of this manual

CATALOGUE

1. FEATURE INTRODUCTION	2
2. PARTS LIST	3
3. SYSTEM ASSEMBLY	3
4. SYSTEM OPERATION	4
5. SYSTEM SETTING	5
6. COIN AND CREDIT VALUE SETTING TABLE	5
7. SYSTEM FUNCTION SETTING TABLE	5
8. VIDEO OUTPUT MODE SETTING	6
9. GAME LIST HIDE/SHOW	6
10. SAVE MODIFIED GAME LIST	8
11. ONE GAME BUSINESS MODE	8
12. DELETE GAME FROM GAME LIST	9
13. ADD GAMES FROM ALL GAME LIST TO ONE OF GAME LISTS	9
14. LANGUAGE SETTING	11
15. NEW GAMES UPDATE	11
16. GAME CONFIGURATION SETTING	11
Type 1: Original setting is on screen setting mode	11
SAVE MODIFIED GAME CONFIGURATION SETTING	12
Type 2: Original setting is DIP SW setting mode	13
Type 3: Special setting mode	14
17. CHANGE 2P or 4P PLAY MODE	16
18. TROUBLE SHOOTING	16
19. GAME KING HARD DISC DATA RETRIEVE	17
20. JAMMA CONNECTOR PIN OUT DEFINITION	18

JAMMA CONNECTOR PIN OUT DEFINITION:

SOLID SIDE		PART SIDE	
GND	A	1	GND
GND	B	2	GND
+5V	C	3	+5V
+5V	D	4	+5V
N · C ·	E	5	N · C ·
+12V	F	6	+12V
KEY NO PIN	H	7	KEY NO PIN
N · C ·	J	8	COIN COUNTER
N · C ·	K	9	N · C ·
RIGHT SPEAKER	L	10	LEFT SPEAKER
GND	M	11	N.C.
VIDEOGREEN	N	12	VIDEO RED
VIDEO SYNC	P	13	VIDEO BLUE
N.C.	R	14	N.C.
N.C.	S	15	N.C.
COIN 2	T	16	COIN 1
2P START	U	17	1P START
2P UP	V	18	1P UP
2P DOWN	W	19	1P DOWN
2P LEFT	X	20	1P LEFT
2P RIGHT	Y	21	1P RIGHT
2P SHOOT 1	Z	22	1P SHOOT 1
2P SHOOT 2	a	23	1P SHOOT 2
2P SHOOT 3	b	24	1P SHOOT 3
2P SHOOT 4	c	25	1P SHOOT 4
2P SHOOT 5	d	26	1P SHOOT 5
2P SHOOT6	e	27	1P SHOOT6
GND	f	28	GND

next power on.

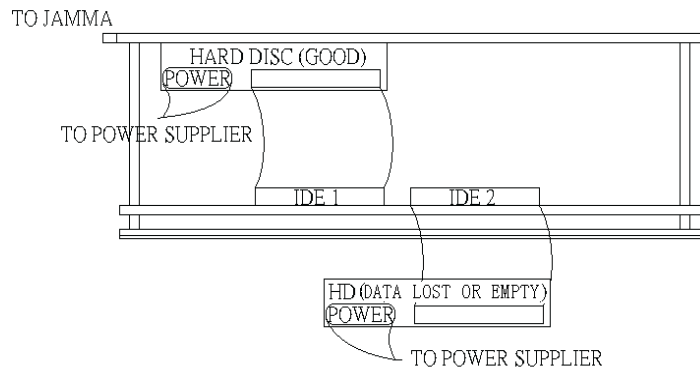
A: After mode changed, please excuse any game and then exit from the game to the game list.

Q: When connected 2 machines for 4 people playing, one of the chassis always be destroyed, why?

A: Please install transformer into machine to isolate A.C. power of chassis with another one.

GAMES FAMILY HARD DISC DATA RETRIEVE

1. Connect hard disc(data lost) to IDE2 port of GAMES FAMILY mainframe and connect power to hard disc. (Figure 40)
2. Set bit 4 of SW 1 at ON position.
3. After turn ON cabinet power, click 2P START button immediately until the Ghost clone program display on screen, system will proceed data retrieve procedure automatically. (It's on VGA mode. To monitor the procedure, please connect VGA monitor.)
4. Around 20 minutes later, system will complete clone procedure and shut down automatically.
5. Remove IDE2 hard disc and set bit 4 of SW 1 at OFF position and proceeds as normal.



(Figure 40)

GAME KING USER MANUAL (4P)

Thank you for purchasing this product. For your convenient to understand this system operation, we hope you read this manual detail.

FEATURE INTRODUCTION:

1. Protect JAMMA I/O from damage of incorrect connection
2. Use P4 motherboard, Intel Pentium4 CPU, Hard Disc, 512 M DDR.
3. Installed multi game emulators software.
4. Allow coins inserted before game selection.
5. After power on player can insert coin at any time
6. Support 4 people play mode.
7. Support one game / multi games business mode.
8. Support 3D games.
9. Support video mode: VGA (31KHZ), NTSC (15KHZ), PAL (15KHZ), SEGA (24KHZ).
10. Support two-channel stereo audio.
11. Faster I/O response and more stable system operation.
12. Classified all games to Stage, Flying/Shooting, Wrestle/Fighting, Maze/Puzzle, Adult, Sport, Misc./Others, and Special/Classical game list.
13. Each game list can be hided or showed.
14. Each game in list can be deleted or called back.
15. Support simple Chinese and English.
16. Game configurations are adjustable.
17. Support coin counter.
18. Set all games coin and credit value by one DIP SW.
19. One touch key can retrieve data automatically when Hard Disc data lost.
20. Support new games update.

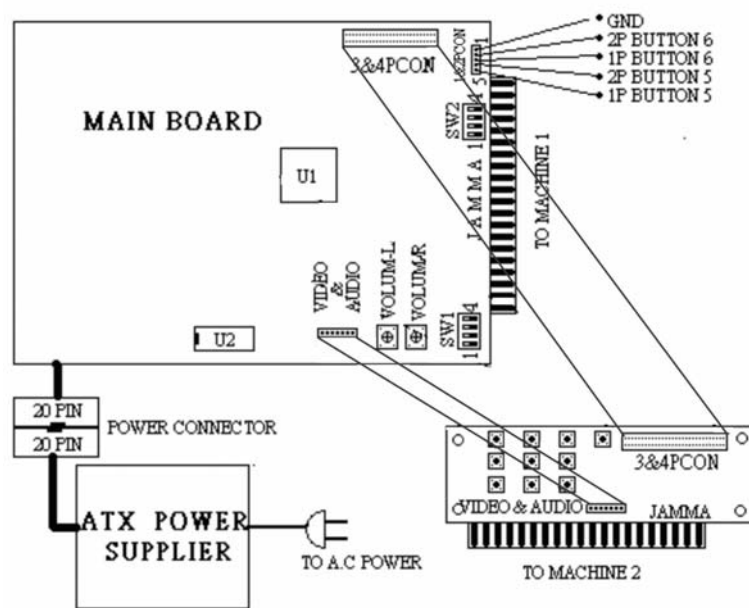
PARTS LIST:

1. Games Family mainboard. (Double deck).
2. ATX power supplier with an AC power wire.
3. User manual.

Suggestion: If you need to deliver this product to your customer please mind keeping the cushion package box complete to avoid the HARD DISC damaged.

SYSTEM ASSEMBLY:

1. Finish each parts connection as the picture below (Figure 1):



(Figure 1)

10. Operate step 6 to 11 on page 12 for saving the game configuration setting (Figure 28).

CHANGE 2P or 4P PLAY MODE:

1. Switch ON bit 4 of SW1 (Figure 3).
2. Press 2Ps1 key to change 2P or 4P mode.
3. Switch OFF bit 4 of SW1 (Figure 3).
4. enter any game and play once then exit from the game to the game list ,It will save the setting.

TROUBLE SHOOTING

Q & A:

Q: Pressed 1P START button for 3 seconds, also can't back to game list.

A: Switch off SW1 bit 4 and bit 3.

Q: 3&4P connector board doesn't work.

A: Switch ON SW1 bit4.

Q: System can start but can't entry game mode.

A: Execute "GAMES FAMILY HARD DISC DATA RETRIEVE" on page 17.

Q: After power on around 2 minutes, the picture still got messy (no synchronous).

A: It might be got a unbecfitting video output mode, please change video output mode to PAL or NTSC. (See page 6 "VIDEO OUTPUT MODE SETTING".)

Q: During 3P and 4P are playing, video mode always be changed.

A: Check bit 4 of SW2 whether it's set at ON position, please set it at OFF position after corrected video output mode.

Q: After power on, press the switch bottom of mainboard, system can't start and the fan have no rotation.

A: After switch machine power on, DO NOT press switch bottom of mainboard. The system will start automatically in 3 seconds.

Q: Changed 2p or 4p playing mode but can't keep playing mode after

2. Select the game that will be set (Ex. Tank Force) and start the game (Figure 35).
3. Press 1Ps6. key.
4. Select “Dip Switches” item (Figure 35) and press 1P START button.

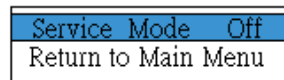


(Figure 36)



(Figure 37)

5. Select “Service Mode” item and set “On” by moving 1P joystick left or right (Figure 36).
6. Press 1Ps6 key to close the current setting window and modify configuration setting by 1P joystick (Figure 37).
7. After finished all configurations setting, press 1Ps6 key and set “Service Mode” Off (Figure 38).



(Figure 38)

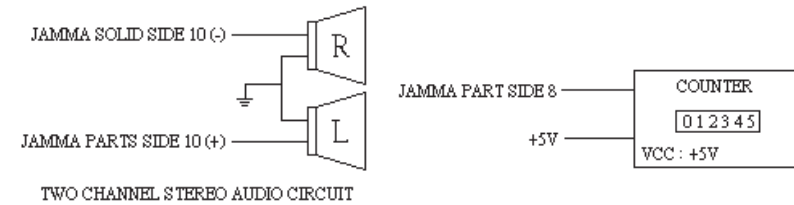


(Figure 39)

8. Press 1Ps6 key to delete the small setting window (Figure 39).
9. Press 2Ps6 key to back to game list (Figure 24).

Warning: Use a wrong A.C. power input or connect the mainboard with JAMMA slot opposite direct would destroy power supplier or mainboard seriously.

2. Two channel stereo audio circuit (Figure 2):



(Figure 2)

(Figure 2.1)

3. Counter connect circuit (Figure 2.1)

SYSTEM OPERATION:

1. Switch on machine power and ATX Power Supplier (DO NOT press switch bottom of mainboard. The system will start automatically in 3 seconds). After 90 seconds game list will shows on screen
2. Insert coins first and than select game. (It also could be adjusted to insert coins after game select. Please see SYSTEM FUNCTION SETTING TABLE on page 5.)
3. Select game name by moving 1P joystick. Press 1P Start Button to start game mode.
4. Escape from game mode to game list by pressing 1P Start Button (or pressing 1P start and A button, Please see SYSTEM FUNCTION SETTING TABLE on page 5.) for 3 seconds.
5. Change game list by pressing 1P button A or B.

SYSTEM SETTING

COIN AND CREDIT VALUE SETTING TABLE:

SW2:

COIN	CREDIT	SW2		
		3	2	1
1 COIN	1 CREDIT	OFF	OFF	OFF
1 COIN	2 CREDITS	ON	OFF	ON
1 COIN	3 CREDITS	ON	ON	OFF
1 COIN	4 CREDITS	ON	ON	ON
2 COINS	1 CREDIT	OFF	OFF	ON
3 COINS	1 CREDIT	OFF	ON	OFF
4 COINS	1 CREDIT	OFF	ON	ON

(TABLE 1)

SYSTEM FUNCTION SETTING TABLE SW1:

FUNCTION \ SWITCH POSITION		4	3	2	1
GAME MODE		OFF			
SETTING MODE		ON			
MULTY GAME MODE			OFF		
SINGLE GAME MODE			ON		
EXIT OPERATION	PRESS 1P START BUTTON ONLY			OFF	
	PRESS 1P START AND BUTTON A			ON	
INSERT COINS	BEFORE GAME SELECT				OFF
	AFTER GAME SELECT				ON

(TABLE 2)

VIDEO OUTPUT MODE SETTING:

1. Switch ON bit 4 of SW1 (Figure 3).

(Figure 32). Select setting item or modify setting by moving 1P joystick left or right (Figure 32).

5. After setting modified, select "Return to Main Menu" (Figure 33) and press 1P START button to back to main menu (Figure 34).
6. Select "Return to Game" (Figure 34) and press 1P START button to back to game mode (Figure 30).
7. Press 2Ps6 key to back to game list (Figure 24).
8. Some of games will appears the dialog window (Figure 25) after press 2Ps6 key, please select "Quit Game" item by 1P joystick and press 1P START button to back to game list (Figure 24).
9. Operate step 6 to 11 on page 12 for saving the game configuration setting (Figure 28).

Coin A	1 Coin/1 Credit
Coin B	1 Coin/1 Credit
2 Coins to Start, 1 to Continue	Off
Unused	Off
Difficulty	2
Free Play	Off
Freeze	Off
Flip Screen	Off
Demo Sounds	On
Allow Continue	No
Game Mode	Game
Return to Main Menu	

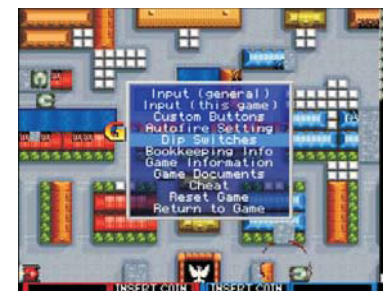
(Figure 32)

Coin A	1 Coin/1 Credit
Coin B	1 Coin/1 Credit
2 Coins to Start, 1 to Continue	Off
Unused	Off
Difficulty	6
Free Play	Off
Freeze	Off
Flip Screen	Off
Demo Sounds	Off
Allow Continue	Yes
Game Mode	Game
Return to Main Menu	

(Figure 33)

Input (general)
Input (this game)
Custom Buttons
Autofire Setting
Dip Switches
Bookkeeping Info
Game Information
Game Documents
Reset Game
Return to Game

(Figure 34)



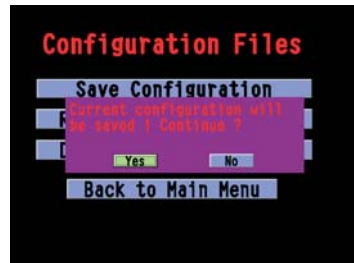
(Figure 35)

Type 3: Special setting mode (Example: NAMCO SYSTEM 1 serial etc).

1. Switch ON bit 4 of SW1 (Figure 3).

twice to save modified configurations (Figure 28).

9. Select “Back to Main Menu” (Figure 27) and press 1P START button to back to “System Setting” (Figure 26).
10. Select “Exit” (Figure 26) and press 1P START button to back to game list (Figure 29).
11. Switch OFF bit 4 of SW1.



(Figure 28)



(Figure 29)

Type 2: Original setting is DIP SW setting mode. (Example: CAPCOM CPS1 serial etc).

1. Switch ON bit 4 of SW1 (Figure 3).
2. Select the game that will be set (Ex. Street fighter II’) and start the game (Figure 30).

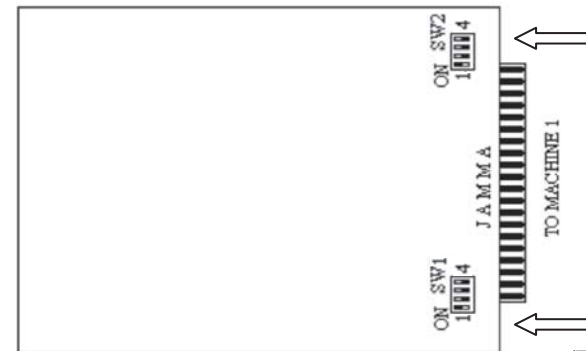


(Figure 30)



(Figure 31)

3. Press 1Ps6 key and select “Dip Switches” by 1P joystick (Figure 31).
4. Press 1P START button to entry configuration setting menu



(Figure 3)

1. Press 2Ps4 key , video output mode will be changed as below:
VGA⇒NTSC ⇒PAL⇒SEGA ⇒VGA
2. Switch OFF bit 4 of SW1

GAME LIST HIDE/SHOW

1. Press K1 key.



(Figure 4)

- Keep system working at game list (Figure 4).
- Select “Game List Setting” item by 1P joystick (Figure 5) and press 1P START button to entry “Game List Setting” menu (Figure 6).



(Figure 5)



(Figure 6)

- Select “Show/Hide Game list” item by 1P joystick (Figure 6).



(Figure 7)



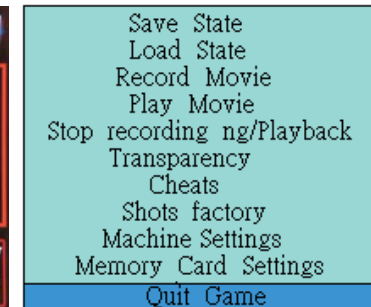
(Figure 8)

- Press 1P START button to entry “Show/Hide Game List” menu (Figure 7).
- Select game list item by 1P joystick and press 1P START button to decide show or hide. Dark square means show and light square stands for hide. After finish all game lists Show or Hide setting, select “Exit” (Figure 7) and press 1P START button to back to “Game List Setting” menu (Figure 8).

- Some of games will appears the dialog window (Figure 25) after press 2Ps6 key, please select “Quit Game” item by 1P joystick and press 1P START button to back to game list (Figure 24).



(Figure 24)



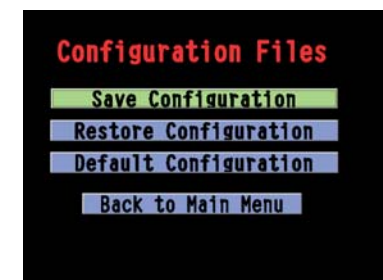
(Figure 25)

SAVE MODIFIED GAME CONFIGURATION SETTING

- Press 2Ps3 key to entry “System Setting” mode (Figure 26).
- Select “Config Files” item (Figure 26) and press 1P START key to entry “Config Files” menu (Figure 27).



(Figure 26)



(Figure 27)

- Select “Save Configuration” item (Figure 27) and press 1P START



(Figure 20)



(Figure 21)

NEW GAMES UPDATE:

About new game update information please ask to vender. We'll deliver new games and tools to all of our venders when new games announce.

GAME CONFIGURATION SETTING:

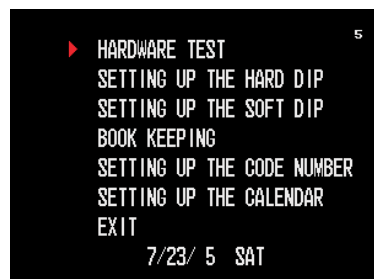
Type 1: Original setting is on screen setting mode.

(Example: SNK NEO GEO, CAPCOM CPSII serial etc).

1. Switch ON bit 4 of SW1 (Figure 3).
2. Select the game that will be set (Ex. Metal Slug 3) and start the game (Figure 22).



(Figure 22)



(Figure 23)

3. Press 1Ps5 key to entry the game original setting mode (Figure 23).
4. After finished the game setting and exited to the game mode (Figure 22), press 2Ps6 key to back to game list (Figure 24).



(Figure 9)



(Figure 10)

* SAVE MODIFIED GAME LIST*

7. Select "Save Current Game List" item (Figure 8) and press 1P START button twice to save game list (Figure 9).
8. Select "Back to Main Menu" (Figure 10) and press 1P START button to back to "System Setting" menu (Figure 11).



(Figure 11)



(Figure 12)

9. Select "Exit" (Figure 11) and press 1P START button to back to game list (Figure 12).

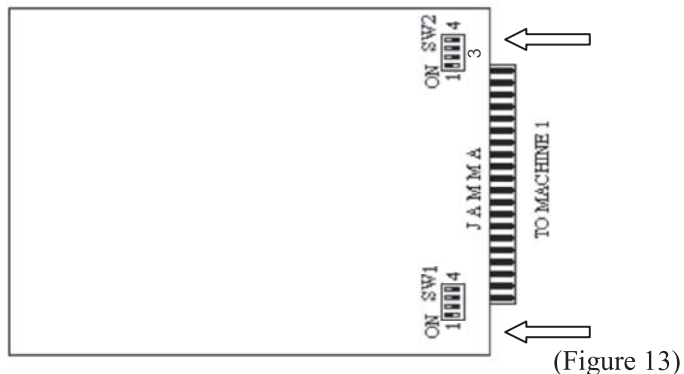
Note:

1. Working list can't be hid.
2. "Restore Game List" (Figure 10) means to get back the older game list.
3. "Restore Default Game List" (Figure 10) means to retrieve to factory game list setting.

ONE GAME BUSINESS MODE:

1. Select a favorite game and entry to game mode.

2. Switch on SW1 bit 3 (Figure 13).
3. “Escape to game menu” function will be disabled.



(Figure 13)

DELETE GAME FROM GAME LIST

1. Switch ON bit 4 of SW1 (Figure 3).
2. Select the game name that will be deleted at game list (Figure 14) and press 1Ps4 key. The game will disappear from game list (Figure 15).



(Figure 14)



(Figure 15)

3. Press 2Ps3 key to entry “System Setting” menu (Figure 5).
4. Select “Game List Setting” item (Figure 5) and press 1P SART button to entry “Game List Setting” menu (Figure 8).
5. Execute step 5 to 8 operations on page 8.

ADD GAMES FROM ALL GAME LIST TO ONE OF GAME LISTS

1. Switch ON bit 4 of SW1 (Figure 3).

2. Press 2Ps2 key to entry game lists menu (Figure 16).
3. Select “All Games” and press 1P START button to entry “All” game list (Figure 17).
4. Select a favorite game (Figure 17) and press 1Ps3 key to entry game lists menu (Figure 18).
5. Select a destination game list and press 1P START button (Figure 18). The game will be added to the game list (Figure 19).
6. Press 2Ps3 key to entry “System Setting” menu (Figure 5).
7. Select “Game List Setting” item (Figure 5) and press 1P SART button to entry “Game List Setting” menu (Figure 8).
8. Execute step 5 to 8 operations on page 8.



(Figure 16)



(Figure 17)



(Figure 18)



(Figure 19)

LANGUAGE SETTING:

1. Press K1 key and select “Language Setting” item (Figure 20).
2. Press 1P START button to change language from English to simple Chinese or simple Chinese to English (Figure 20, Figure 21).