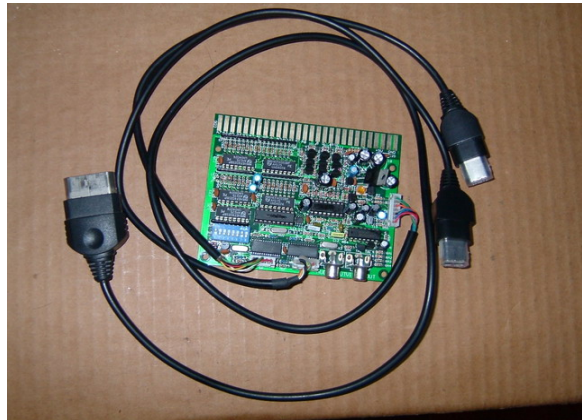


XBOX TIMER BOARD



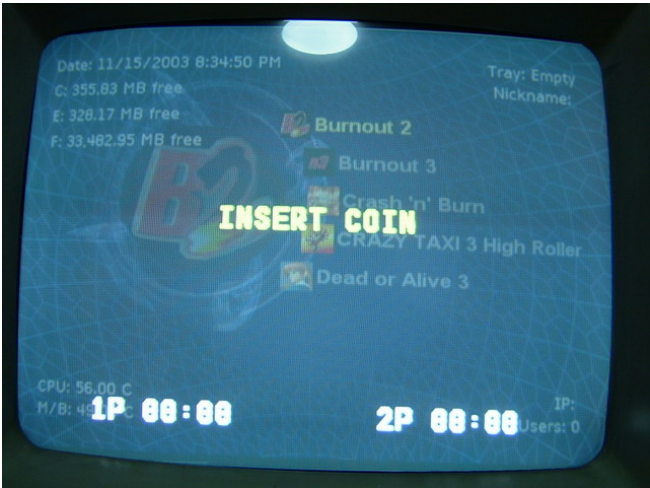
Feature:

1. Apply to all XBOX control by timer. It can control more than 200 games in XBOX. It easy to handle, stander 28pin jamma connector.
2. Add new games by yourself;
3. 1P / 2P time counter independent (2 coin slots) or 1P / 2P use one time counter (one coin slot);
4. 1P / 2P time counter displayed on screen independent;
When finish until 30 seconds, time counter will change to red color.
5. "Insert coin" prompt on screen;
6. "Time out" and "continue" prompt on screen with sound alert;
7. Auto back to game menu after "continue" time out;
8. Press "menu key" back to game menu or press 1P button 3 second back to game menu;
9. One coin play-time can be adjusted from 1~30 minutes by DIP-Switch;
10. Attract sound can be enabled or disabled by DIP-Switch;
11. Free-play mode can be selected by DIP-Switch;
12. Test mode (be used to copy games from CD/DVD to hard disk) can be selected by DIP-Switch;
13. Can be connected to normal TV set;

Game menu:



“INSERT COIN” prompt:



“Time out” and “continue” prompt:



1P / 2P time counter independent:



CONNECT instruction for every pin

PLAY TIME PER COIN	DIP-SWITCH 1-5				
	1	2	3	4	5
Test Mode	----	----	----	----	----
1 MINS	ON	----	----	----	----
2 MINS	----	ON	----	----	----
3 MINS	ON	ON	----	----	----
4 MINS	----	----	ON	----	----
5 MINS	ON	----	ON	----	----
6 MINS	----	ON	ON	----	----
7 MINS	ON	ON	ON	----	----
8 MINS	----	----	----	ON	----
9 MINS	ON	----	----	ON	----
10 MINS	----	ON	----	ON	----
11 MINS	ON	ON	----	ON	----
12 MINS	----	----	ON	ON	----
13 MINS	ON	----	ON	ON	----
14 MINS	----	ON	ON	ON	----
15 MINS	ON	ON	ON	ON	----
16 MINS	----	----	----	----	ON
17 MINS	ON	----	----	----	ON
18 MINS	----	ON	----	----	ON
19 MINS	ON	ON	----	----	ON
20 MINS	----	----	ON	----	ON
21 MINS	ON	----	ON	----	ON
22 MINS	----	ON	ON	----	ON
23 MINS	ON	ON	ON	----	ON
24 MINS	----	----	----	ON	ON
25 MINS	ON	----	----	ON	ON
26 MINS	----	ON	----	ON	ON
27 MINS	ON	ON	----	ON	ON
28 MINS	----	----	ON	ON	ON

29 MINS	ON	----	ON	ON	ON
30 MINS	----	ON	ON	ON	ON
FREE PLAY	ON	ON	ON	ON	ON

* Test Mode = XBOX hand controller (Use to copy CD to hard disk)

DIP-SWITCH 6

With Demo Sound	ON
Without Demo Sound	----

DIP-SWITCH 7

Return To Menu After Time Out	ON
Don't Return To Menu After Time Out	----

*Some XBOX games can't return to menu on new version XBOX console
You have to put DIP-Switch 7 OFF and reboot XBOX console to enter menu

DIP-SWITCH 8

1 Coin Slot (1P / 2P COM)	ON
2 Coin Slot (1P / 2P Independent)	----

*The 16th pin of JAMMA on solder side will be disabled when DIP-Switch 8 put ON

JAMMA DIAGRAM

PS2BUTTON 1P		Top surface 1P	Button Surface 2P	PS2BUTTON 2P	
Game Pad button	Interface PIN	PIN	PIN	Game Pad button	Interface PIN
LT1	1P KEY7	28	28	2P KEY7	LT1
White	1P KEY6	27	27	2P KEY6	White
Black	1P KEY5	26	26	2P KEY5	Black
Y	1P KEY4	25	25	2P KEY4	Y
X	1P KEY3	24	24	2P KEY3	X
B	1P KEY2	23	23	2P KEY2	B
A	1P KEY1	22	22	2P KEY1	A
RIGHT	1P RIGHT	21	21	2P RIGHT	RIGHT
LEFT	1P LEFT	20	20	2P LEFT	LEFT
DOWN	1P DOWN	19	19	2P DOWN	DOWN
UP	1P UP	18	18	2P UP	UP
START	1P START	17	17	2P START	START
	1P COIN	16	16	2P COIN	
RT1	1P KEY8	15	15	2P KEY8	RT1
	VIDEO GND	14	14	MENU KEY	
	BLUE	13	13	SYN	
	RED	12	12	GREEN	
BACK	1P KEY9	11	11	2P KEY9	BACK
	SPEAKER	10	10	SPEAKER	
		9	9		
		8	8		
		7	7		
	+12V	6	6	+12V	
		5	5		
	+5V	4	4	+5V	
	+5V	3	3	+5V	
	GND	2	2	GND	
	GND	1	1	GND	